

UNIT
14

Final |l| or |əl|



ankle |əl| shovel

le

el

al

Another Spelling

Read and Say

Basic

1. jewel
2. sparkle
3. angle
4. shovel
5. single
6. normal
7. angel
8. legal
9. whistle
10. fossil
11. puzzle
12. bushel
13. local
14. gentle
15. level
16. label
17. pedal
18. ankle
19. needle
20. devil

READ the sentences. **SAY** each bold word.

A diamond is a **jewel**.
 The snow seems to **sparkle** in the sun.
 You cannot see our house from this **angle**.
 Sandy will **shovel** the snow.
 I did not eat a **single** grape.
 My **normal** weight is seventy pounds.
 My sweet little brother is an **angel**.
 It is not **legal** to park a car in a tow zone.
 Did you hear the coach's **whistle**?
 The **fossil** was an old bone.
 This **puzzle** is difficult to solve.
 I picked a **bushel** of apples.
 We watched the **local** newscast.
 My dog is large but **gentle**.
 Can you make the bumpy floor **level**?
 Write your name on the **label**.
 Put your foot on the bike **pedal**.
 Did you hurt your **ankle** when you fell?
 I need a **needle** to sew on the button.
 Your frisky puppy is such a **devil**.

Think and Write

The final |l| or |əl| sounds are usually spelled with two letters. (Some dictionaries show only the final consonant sound because the schwa sound is so weak.)

|l| or |əl| **sparkle, jewel, legal**

- What are three patterns for the final |l| or |əl| sounds?
- How are the |əl| sounds spelled in the Elephant Words?

Now write each **Basic Word** under its spelling of the final |l| or |əl| sounds.

Review

- | | |
|-------------|------------|
| 21. simple | 23. metal |
| 22. special | 24. nickel |
| | 25. double |

Challenge

- | | |
|----------------|-------------|
| 26. mineral | 28. vital |
| 27. artificial | 29. neutral |
| | 30. kernel |

Independent Practice



Spelling Strategy

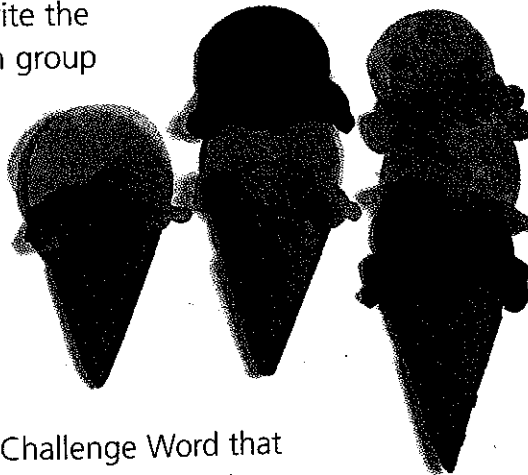
When you hear the final ||| or |ə| sounds, think of the patterns *le*, *el*, and *al*.

Word Analysis/Phonics Complete the exercises with Basic Words.

1. Write the word that has the [k] sound spelled c.
- 2-5. Write the four words that have the |ē| sound in the first syllable.
- 6-7. Write the two words that have double consonants.

Vocabulary: Classifying Write the Basic Word that belongs in each group of words.

8. thread, thimble, _____
9. knee, elbow, _____
10. siren, horn, _____
11. pint, quart, _____
triple, double, _____
13. hoe, rake, _____

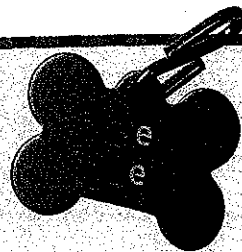


Challenge Words Write the Challenge Word that completes each sentence. Use your Spelling Dictionary.

14. Robin painted her room beige, a _____ color.
15. A natural substance such as quartz is a _____.
16. The heart and lungs are _____ organs.
17. Each yellow _____ on this ear of corn is tender and juicy.
18. These _____ pearls are made of plastic.

Spelling-Meaning Connection

How can you remember how to spell the schwa sound in *angel*? Think of the |ē| sound in the related word *angelic*.



- 19-20. Write *angel* and *angelic*. Then underline the letter in *angelic* that helps you remember how to spell the schwa sound in *angel*.

Word Analysis

1. _____
2. _____
3. _____
4. _____
5. _____
6. _____
7. _____

Vocabulary

8. _____
9. _____
10. _____
11. _____
12. _____
13. _____

Challenge Words

14. _____
15. _____
16. _____
17. _____
18. _____

Spelling-Meaning

19. _____
20. _____

Parts of Speech

1. _____
2. _____
3. _____
4. _____
5. _____
6. _____
7. _____
8. _____

Phrase Fillers

9. _____
10. _____
11. _____
12. _____
13. _____
14. _____
15. _____
16. _____
17. _____
18. _____
19. _____
20. _____
21. _____
22. _____
23. _____
24. _____

Dictionary

Parts of Speech A dictionary gives the part of speech of each entry word. The part of speech is often abbreviated.

- | | | |
|----------------|-----------------------|--------------------------|
| <i>n.</i> noun | <i>adj.</i> adjective | <i>prep.</i> preposition |
| <i>v.</i> verb | <i>adv.</i> adverb | <i>pron.</i> pronoun |

Many words can be used as more than one part of speech. For example, *shovel* can be used as either a noun or a verb.

shov-el [shŭv'əl] *n., pl. shovels* A tool with a long handle and a flattened scoop: *I dug out the ditch with a shovel.* *v. shoveled, shoveling* To pick up or move with a shovel: *Shovel the snow.*

Practice Write the two parts of speech given in your Spelling Dictionary for each word. Do not abbreviate.

- 1-2. sparkle 3-4. special 5-6. early 7-8. throughout

Review: Spelling Spree

Phrase Fillers Write the Basic or Review Word that best completes each phrase.

- | | |
|------------------------------|--------------------------------|
| 9. a _____ of wheat | 21. a sprained _____ |
| 10. a _____ and thread | 22. a mischievous little _____ |
| 11. a shrill _____ | 23. a _____ body temperature |
| 12. to tilt at an _____ | 24. to _____ like a diamond |
| 13. a _____-decker bus | |
| 14. a costly _____ necklace | |
| 15. a very _____ occasion | |
| 16. the _____ driving age | |
| 17. below sea _____ | |
| 18. to _____ a bicycle | |
| 19. a dinosaur _____ | |
| 20. five pennies for a _____ | |

How Are You Doing?

Write your spelling words in ABC order. Practice any misspelled words with a family member.

Proofreading and Writing

Read for Spelling Use proofreading marks to correct ten spelled Basic or Review Words in this part of a mystery story.

Example: I thought about this mystery from every *angel* ~~angal~~.

I had solved the puzzel! Finding the jewel would be simpel. The locol sheriff told me where to find the statue of an anjel. I got a shovle and headed for the abandoned town. There stood the statue. I took a singel step and began to dig. I soon struck metel. With a gentel tug I pulled out a box. The lable was ripped. Through a crack I could see something sparkel.

Basic

1. jewel
2. sparkle
3. angle
4. shovel
5. single
6. normal
7. angel
8. legal
9. whistle
10. fossil
11. puzzle
12. bushel
13. local
14. gentle
15. level
16. label
17. pedal
18. ankle
19. needle
20. devil

Review

21. simple
22. special
23. metal
24. nickel
25. double

Challenge

26. mineral
27. artificial
28. vital
29. neutral
30. kernel

Write a Fairy Tale

Suppose that a farmer planted a field of corn. Instead of corn, jewels grew on the stalks. Write a fairy tale about what happens. Try to use five spelling words. Read your tale to some classmates.

A spell-checking program often gives choices for misspellings, such as *angel* and *angle* for *angal*. Be sure you know the spelling you want.

Proofreading Tip

Proofreading Marks

- ¶ Indent
- ^ Add
- ~ Delete
- ≡ Capital letter
- / Small letter

Expanding Vocabulary

Spelling Word Link

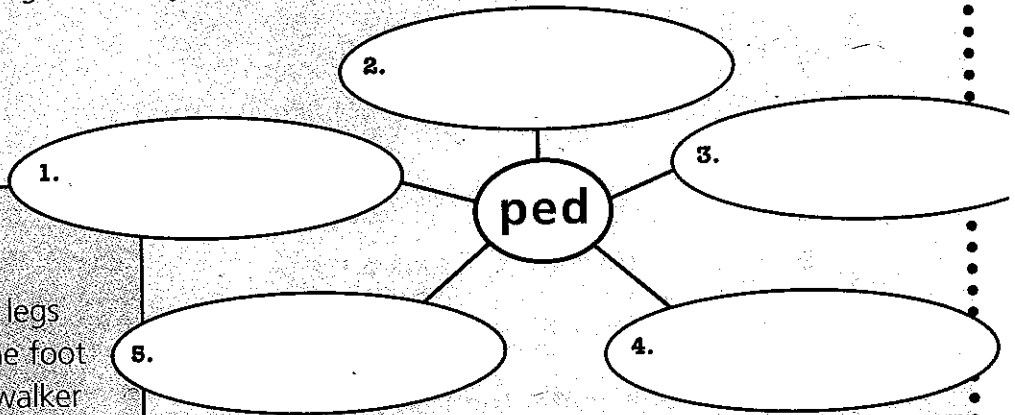
pedal

pedal
pedestrian
pedometer
pedestal
centipede

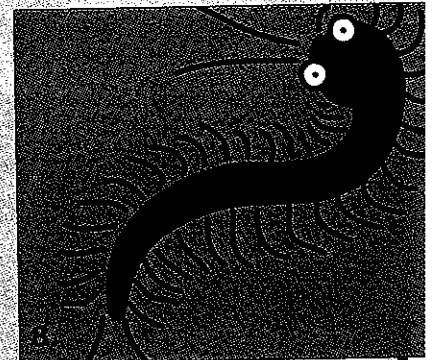
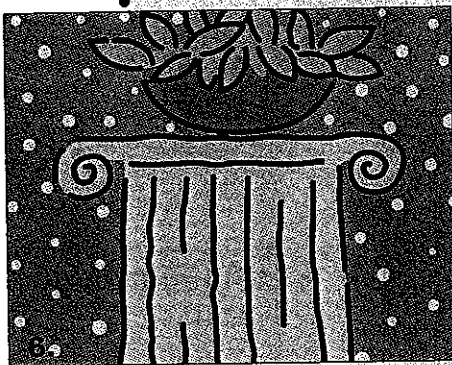
The Word Root *ped* A pedal is a lever worked by the foot. *Pedal* includes the word root *ped*, which means "foot." (A **word root** is a word part that has meaning but is not a word by itself.)

Each word in the word box has the word root *ped*. Write each word in the web next to the number that matches its meaning. Use your Spelling Dictionary.

1. a base or a support
2. a person who walks
3. an insect with many legs
4. a lever worked by the foot
5. a device worn by a walker to measure distance walked



Show You Know! Write a sentence to describe each picture. Use at least one word from the web in each sentence. Write on another sheet of paper.



★ Fact File

A family tree shows one's ancestors, or **pedigree**. *Pedigree* includes the word root *ped* and comes from an Anglo-Norman phrase, *pe de grue*, meaning "foot of a crane." It was thought that a family tree looked like a crane's foot!

Real-World Connection

Science: Gems All the words in the box relate to gems. Look up these words in your Spelling Dictionary. Then write the words to complete this gem guide.

Spelling Word Link

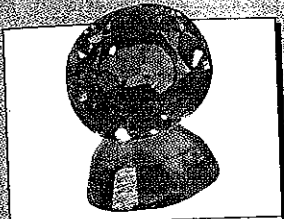
jewel

- topaz
- sapphire
- emerald
- diamond
- onyx
- ruby
- opal
- jade

Precious Gems



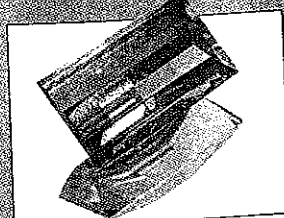
Pale green **(1)** is often carved.



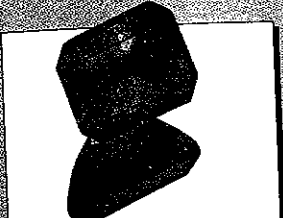
The blue **(2)** may reflect starlike rays of light.



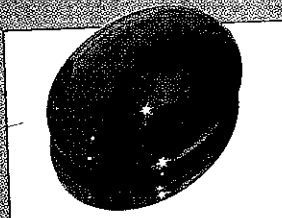
A red **(3)** is found in the gravel of riverbeds.



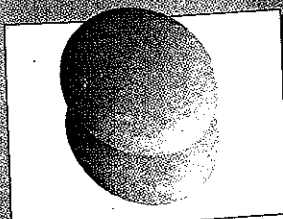
The rare yellow **(4)** is mined in Brazil.



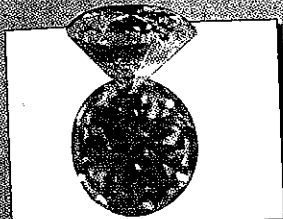
The six-sided green **(5)** is often found in granite.



The **(6)**, often dyed, is used in carving cameos.



The multicolored **(7)** is found in rock cavities.



The usually colorless **(8)** is the hardest gem.

1. _____
2. _____
3. _____
4. _____
5. _____
6. _____
7. _____
8. _____

Try This Challenge

Write Similes Writers often describe colors by comparing them to gems. They may use **similes**, comparisons using *like* or *as*. Write several similes, using the gems named in the word box.

- ✎ The icicles were as sparkly as diamonds.
- ✎ The fireworks flashed like sapphires and rubies.

